

## Embedded Motion Control: Initial Design

### Group 3:

L.L.M. van den Aker	0848904
P. van Dooren	0883056
N. Kaai	0896947
T.J. van Loon	0861750
T. Neilen	0852908
J.W. van de Valk	0909434

### Coordinator:

dr.ir. M.J.G. van de Molengraff

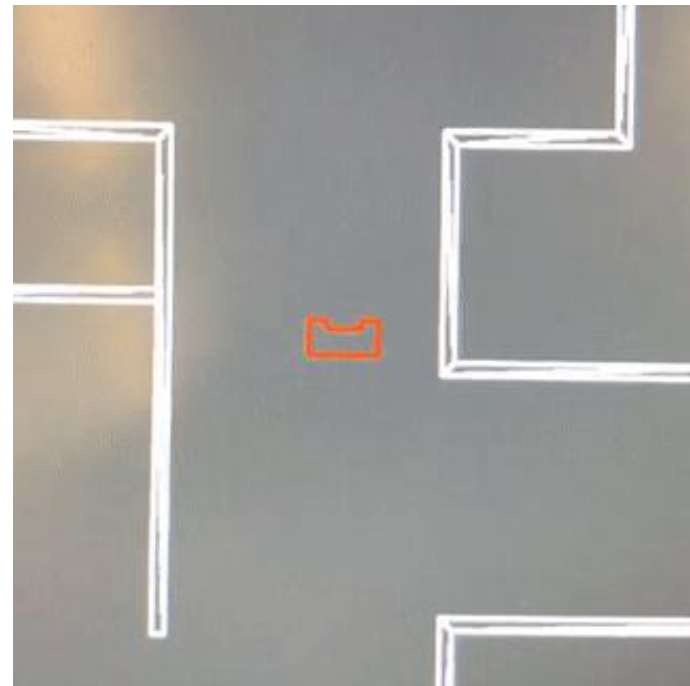
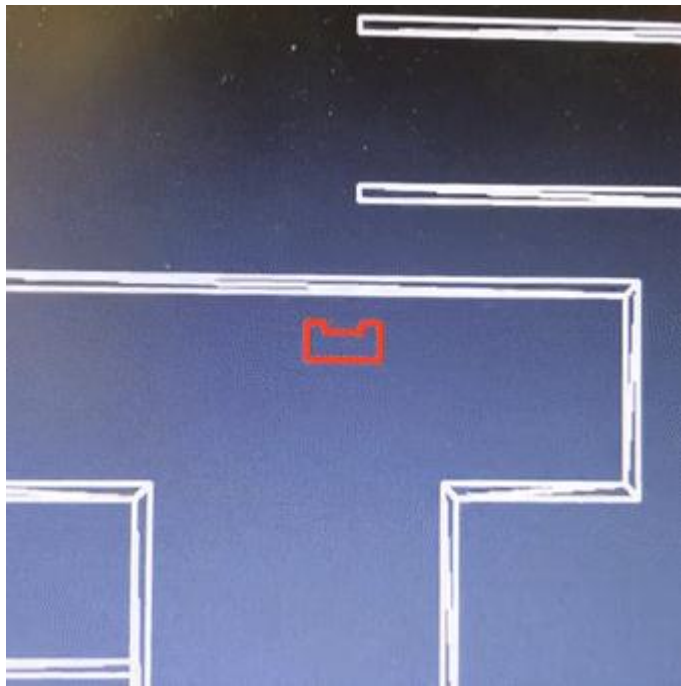
### Tutor:

ir. R.P.W. Appeldoorn



What do we have? – What do we know? – What's next?

# What do we have?

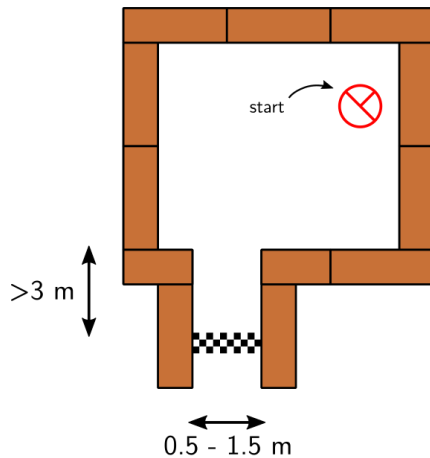
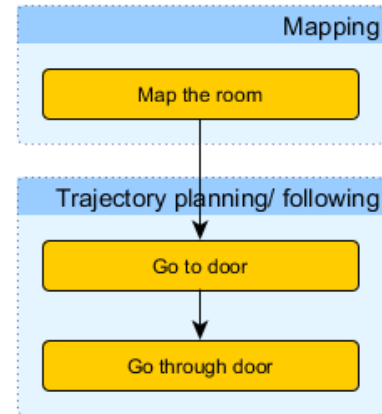


What do we have? – What do we know? – What's next?

# What do we know?

Split it in three parts:

1. World model
2. Trajectory planning
3. Trajectory following

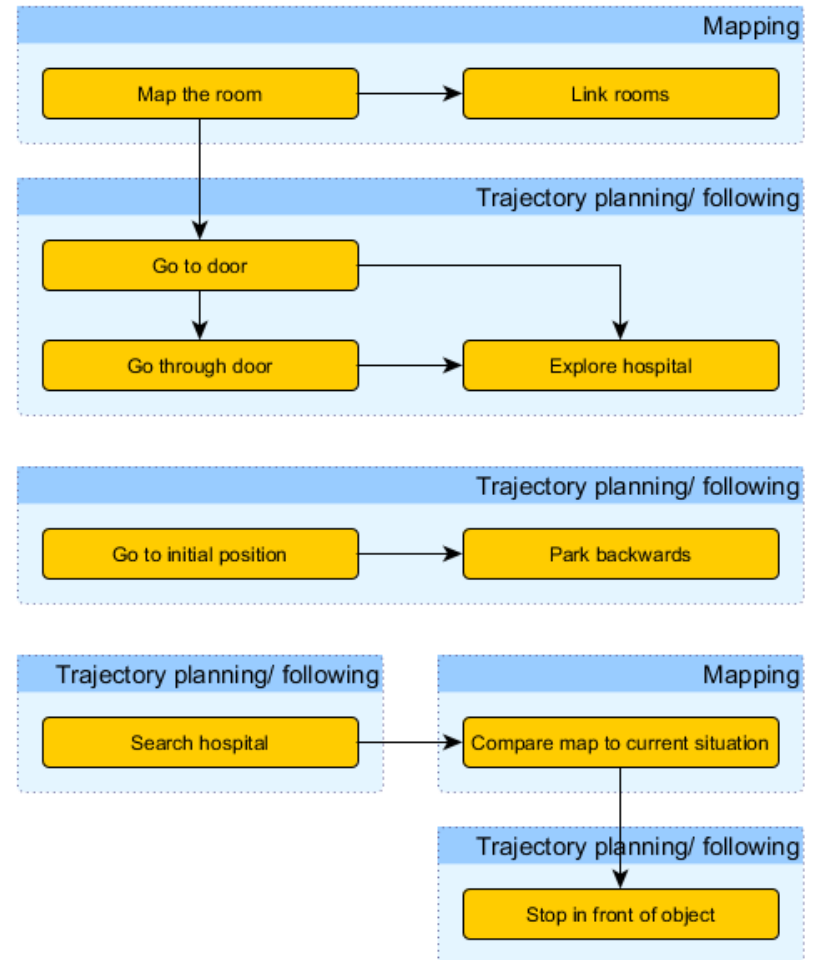
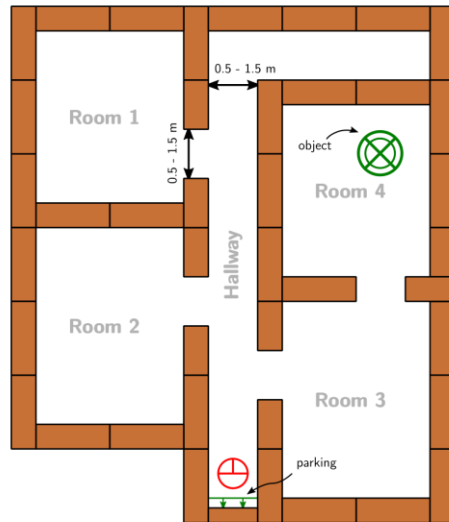


What do we have? – What do we know? – **What's next?**

# What's next?

Split it in three parts:

1. World model
2. Trajectory planning
3. Trajectory following



**Any questions?**