

Embedded Motion Control: Initial Design

Group 3:

L.L.M. van den Aker	0848904
P. van Dooren	0883056
N. Kaai	0896947
T.J. van Loon	0861750
T. Neilen	0852908
J.W. van de Valk	0909434

Coordinator:

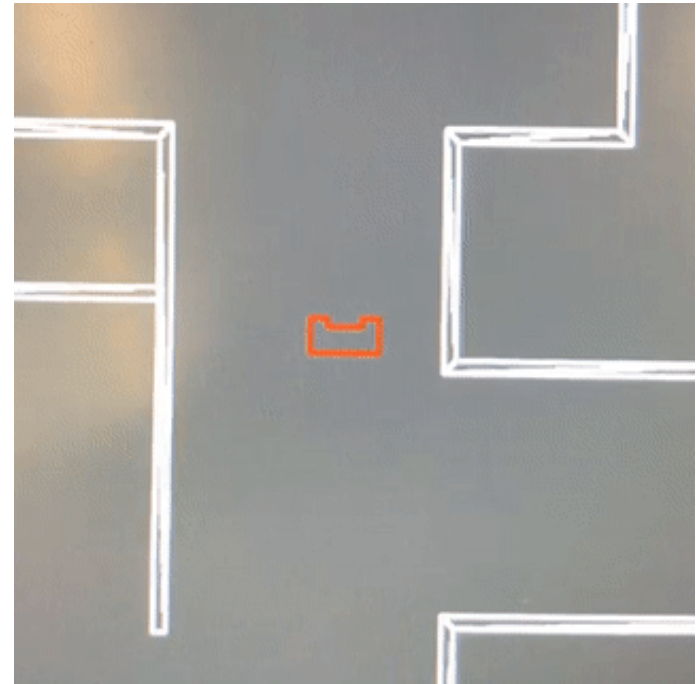
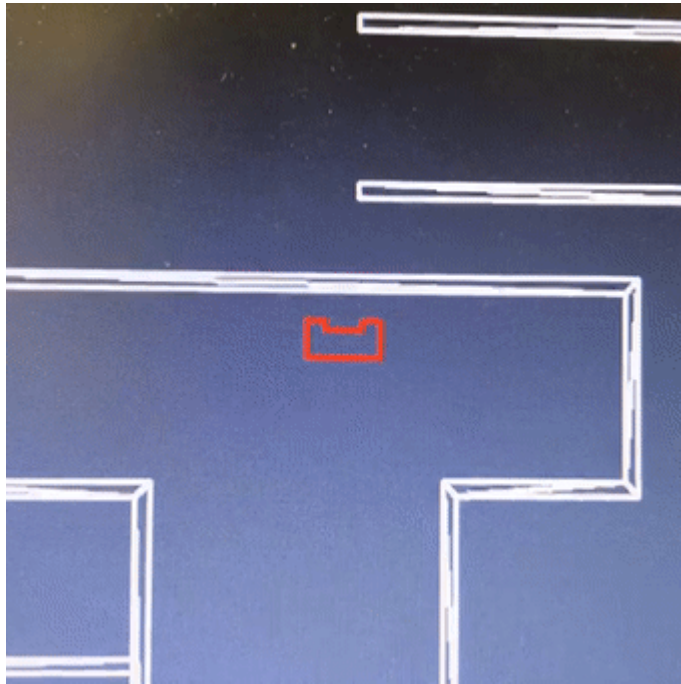
dr.ir. M.J.G. van de Molengraff

Tutor:
RUVU



What do we have? – What do we know? – What's next?

What do we have?

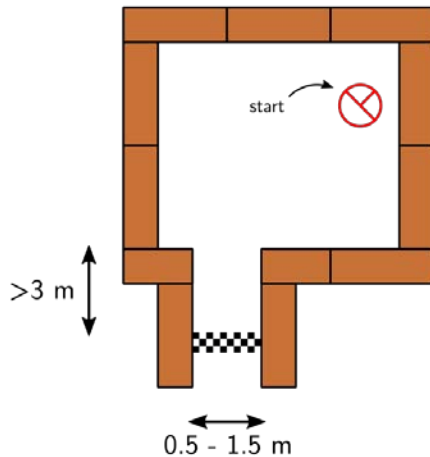
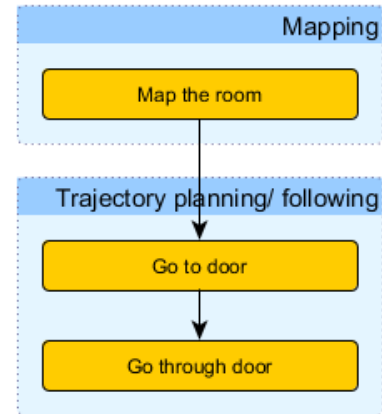


What do we have? – What do we know? – What's next?

What do we know?

Split it in three parts:

1. Mapping
2. Trajectory planning
3. Motion control

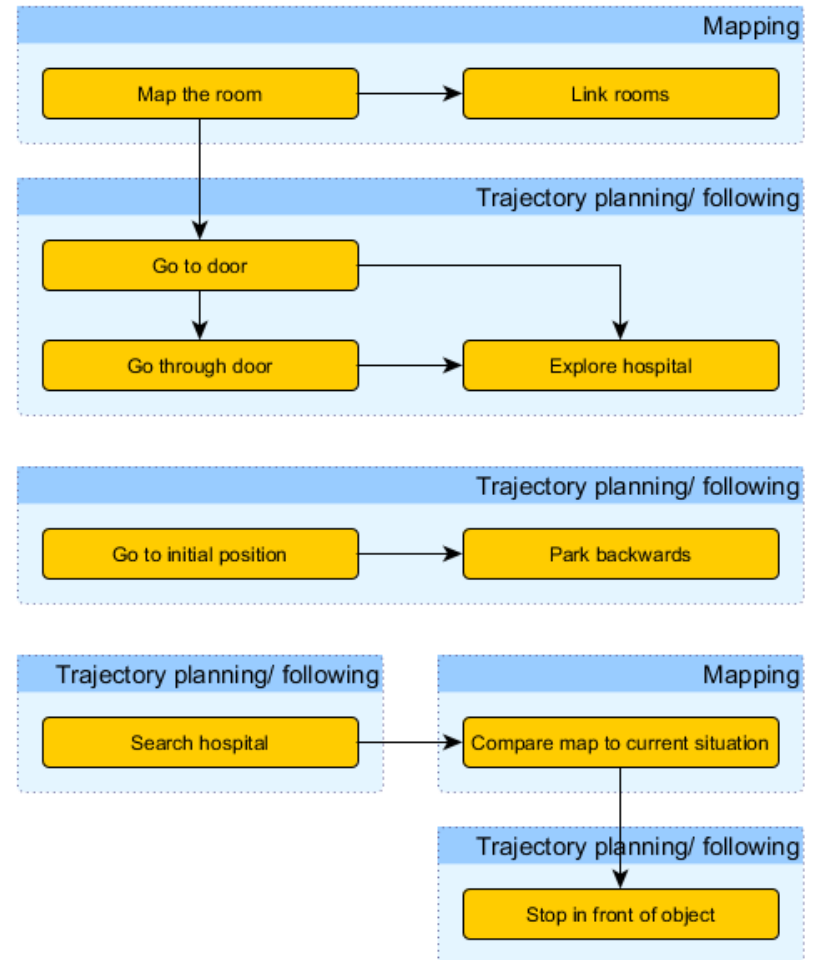
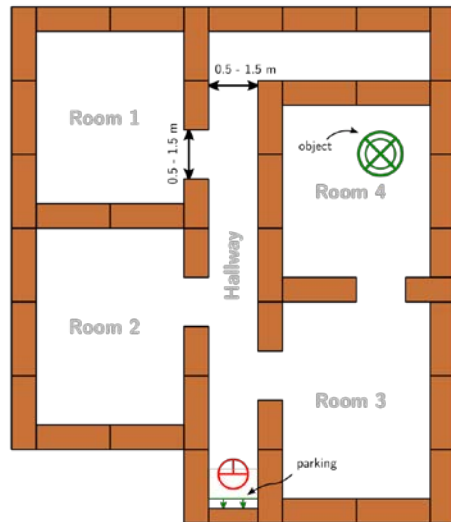


What do we have? – What do we know? – **What's next?**

What's next?

Split it in three parts:

1. Mapping
2. Trajectory planning
3. Motion control



Any questions?